



Sophia Snow Place

- Sophia Snow House
- *The Residences at Snow Place*

Welcome to Sophia Snow House!

We are excited to share all that is special about life at Sophia Snow House. We are a diverse community of seniors enjoying a wonderful balance of community living and private time in a setting conducive to keeping you healthy and safe. Your peace-of-mind is important to us, and our committed and trained staff is available to you 24 hours a day and seven days a week. Our goal is to meet you where you are physically, cognitively, and socially and to encourage your growth and stability as we join together on the trajectory called aging. This journey is enriched by an atmosphere that embraces all that you bring to your friends at Sophia Snow House.

Our residents enjoy a private suite with a bathroom, meals together in our dining room, medication management, enriching activities, and special events that bring together residents and their families. Our medical staff is well-trained and committed to your needs, our dining staff informed of your nutritional goals, our house keeping group dedicated to keeping your personal effects – room, laundry, and common spaces – in sanitary and perfect condition, and our Management Team available to you and your family whenever anything arises. And, we are located in one of the most beautiful areas in Greater Boston with views of Allandale Woods including our unique vernal pool. We are organized a not-for-profit organization and are licensed by the Massachusetts Department of Public Health which ensures that you are always our priority

We welcome all to be part of our family at Sophia Snow House, and if you haven't already, we invite you to contact us for a visit. We look forward to it!

All the best,

Patty Roggeveen
President/CEO

Helayne Ramirez
Executive Director

1205–1215 Centre Street • West Roxbury, Massachusetts 02132
617/ 325-7900 • fax 617/ 325-6293
email info@sophiasnowplace.org • www.sophiasnowplace.org



Sophia Snow House Supportive Living

What makes us so special?

- Sophia Snow is organized as a not-for-profit organization which means our bottom-line puts residents, not stockholders, first.
- Our medical staff is well-trained and is supervised by a Registered Nurse who also holds a Bachelor of Science.
- Medication administration is well organized, safe, and reliable. It is more than just a reminder to residents. It follows protocols and inspections by the Massachusetts Department of Public Health (DPH). Our license from DPH permits us to administer prescribed medications to residents, and our staff is responsible for getting everyone what they need when they need it. Our RN is in contact with resident physicians if there is a need to change or adjust anything.
- Our resident suites are spacious with about 400 square feet of living space with a private bathroom that includes a handicap accessible shower.
- Beyond resident suites, Sophia Snow House enjoys wonderful communal spaces including: a spacious dining room; a pleasant community room with a television and piano; a cheery sunporch; and outside patios and walking paths.
- Sophia Snow staff will assist residents and families who qualify apply for support from the Department of Transitional Assistance.
- Respite suites are available at \$250 per day.
- Our all-inclusive fee of \$6,267 a month includes the following:
 - A private resident suite.
 - Oversight and care by 24-hour seven days a week medical staff.
 - Assistance in scheduling medical appointments.
 - Assistance with bathing and personal care if needed.
 - Restaurant-style dining, and a morning coffee/tea service.
 - Complete housekeeping and laundry services.
 - Daily enriching activities.

A one-time nonrefundable community fee of \$3,500 is payable upon a reservation for a suite at Sophia Snow House.

Please call 617-325-7900 for additional information.

Sophia Snow House

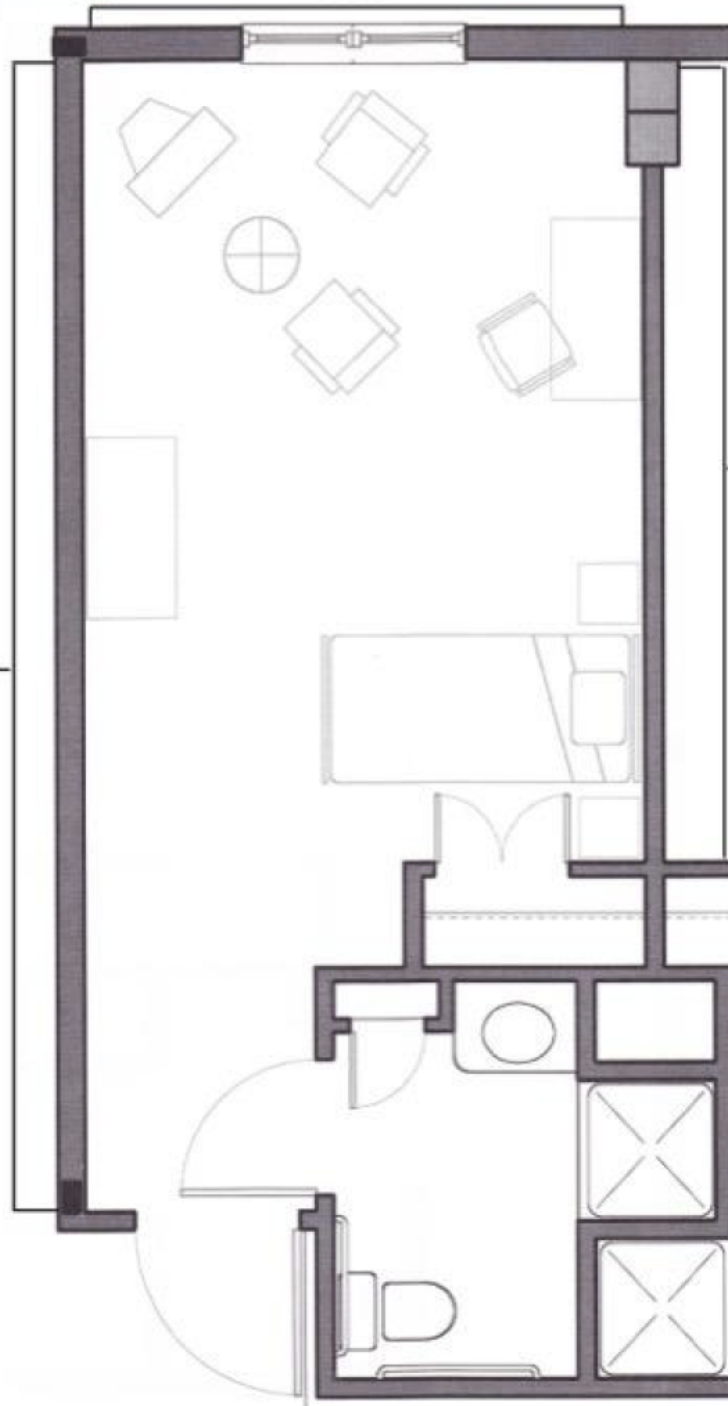


W - Height top to ledge- 68"
Height ledge to floor- 16.5"
Width of ledge- 57"

12'2"

25'

17' 10"



STANDARD ROOM