



Sophia Snow Place

- **Sophia Snow House**
- *The Residences at Snow Place*

Welcome to Sophia Snow Place - Independent Living

Sophia Snow Place is an Independent Living community for seniors who wish to live in Boston and seek freedom from the hassles of home maintenance, lawn care and snow removal - at a price that leaves money for enjoyable retirement. With a very competitive entrance fee, our low monthly fee covers heat, hot water, and all interior and exterior maintenance. Community rooms on the ground floor invite friendly gatherings and social events and provide venues for our extensive activities program. Visit our library for a good book, email friends in our computer nook, or work out in our fitness center. A la carte services available to residents include meals, laundry, housekeeping, salon and spa services, transportation, and personal care. Join one of our frequent outings or venture out on your own. The excitement of Boston is minutes away.

Located at the crossroads of Jamaica Plain, Roslindale, Chestnut Hill and West Roxbury, Sophia Snow Place offers a continuum of care from Independent Living at the Residences at Snow Place to Supportive Living at Sophia Snow House here on our campus across from the Arboretum and adjacent to Allendale Woods reservation land. One visit to our bistro and you will feel the warm and welcoming community that is Sophia Snow Place. Our accessible and inviting common spaces encourage informal gatherings of residents and guests, while our resident-driven rich and robust activities program caters to every interest, including daily exercise, cultural events, spiritual gatherings, intellectually stimulating programs, clubs, parties, and a wide variety of outings.

Sincerely,

Patty Roggeveen
President, CEO

Helayne Rameriez
Executive Director

Facts You Should Know About Sophia Snow Independent Living

- ❖ We are a not-for-profit retirement community of sixty-six independent apartments for those who are 62 years old and over, or 55 years old and disabled.
- ❖ It is a diverse community, and affordable to most retired homeowners in the Greater Boston area.
- ❖ A refundable deposit of \$1,000 will put you on our priority list so you can receive early notification of available apartments.
- ❖ The current entry fee of \$279,000 - \$316,000 for the Independent Living apartments is 93% refundable to you or your estate.
- ❖ The current monthly fee of \$1,224 for the independent living covers interior/exterior maintenance and all utilities except electricity. If you have a second person living in your apartment it is an additional \$134 a month and if you have a car another \$50 a year for assigned parking.
- ❖ The campus setting offers a continuum of housing and service options. A Resident Services Coordinator provides referral and service coordination as needed and facilitates activities and events with the residents.
- ❖ Additional services such as housecleaning, laundry, meals and personal care are available on an a la carte basis for Independent Living residents.

In-House Supportive Services
Available to Independent Living Residents of
Sophia Snow Place

Dining Services:

Our Independent Living residents can order meals through our award-winning Sophia Snow House dining services. There is no mandatory minimum number of meals, you may order as many or as few meals as you want. Simply make a reservation up to two hours before serving time or remove your name from the list if your plans change. Residents dining with us for 12 or more meals in a month receive a 50 cent per meal discount. Breakfast and Lunch will be served in the Private Dining Room at 8:00 am and 12:00 noon, unless the number of diners requires moving the seating to the Great Room. Tray service is available for a \$2.00 additional charge. Pricing is as follows:

Breakfast: \$8.50	Twelve or more meals a month: \$8.00
Lunch: \$10.50	Twelve or more meals a month: \$10.00
Dinner: \$15.50	Twelve or more meals a month: \$10.00

Housekeeping services:

Housekeeping services may be scheduled on a regular or an occasional basis. Place your request for service with the Receptionist/Administrative Assistant. Our Housekeeping Supervisor will contact you to confirm staff ability to provide service as requested, or to negotiate other arrangements. The fee for Housekeeping Services will be \$29.50/hour, billable in 15-minute increments. Carpet cleaning is charged at the following rate:

Hallway only or spot cleaning:	\$45
One room plus hallway:	\$70
Two rooms plus hallway:	\$100
Three rooms plus hallway:	\$125

Laundry:

Each apartment is equipped with a stacked washer and dryer for your convenience. Should you desire laundry services for your personal laundry or for just your larger items, such as bedspreads, these services are available through our Housekeeping Department at the rate of \$11.50/load. Place your request for service with the Receptionist /Administrative Assistant. Our Housekeeping Supervisor will contact you to confirm staff ability to provide service as requested, or to negotiate other arrangements.

Personal Care Services:

Personal Care services are available on a very limited basis through our Supportive Living Nursing Department. Residents are encouraged to arrange necessary personal care through outside agencies or resources. Our Resident Services Coordinator will be very happy to assist you in locating and securing these services. Should there be a minimal gap in services, we will do our best to fill that gap by providing in-house services on a limited basis. Each case will be reviewed and decided individually based on services needed and staff availability. The cost for service will be \$30/hour, also, be decided on an individual basis.

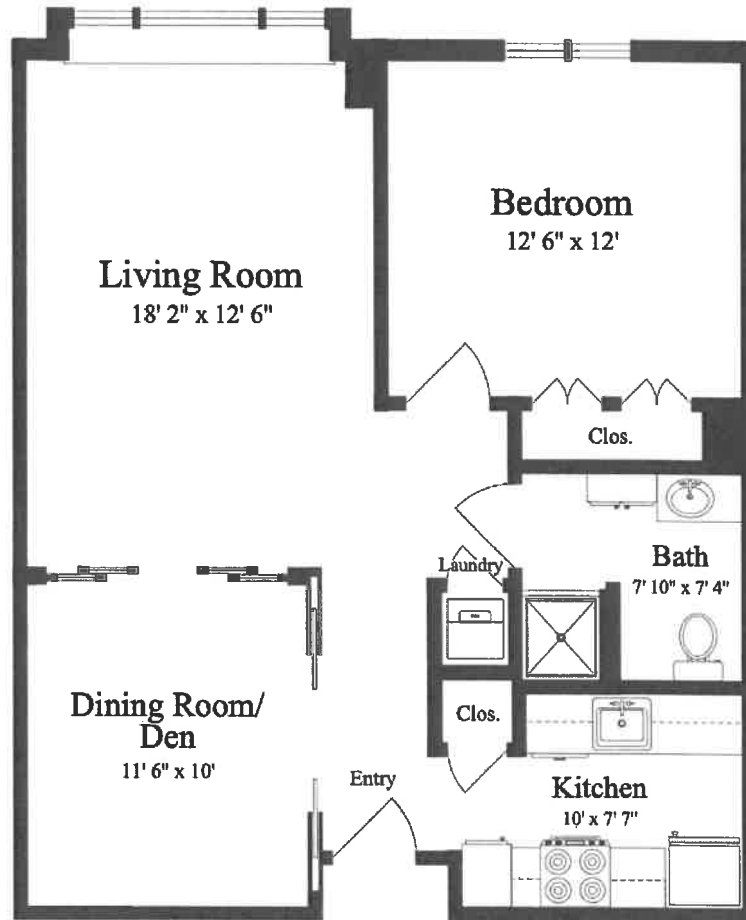
Maintenances Service:

Day-to-day maintenance on all apartments has no additional cost. There is a fee for our services on your personal possessions of \$44 an hour.

Residents will receive a bill at the end of each month for the supportive services they have received. Payment should be made by check payable to Sophia Snow House, Inc.

Unit #203 Floor Plan

dimensions and square footage are approximate.



SECOND FLOOR

*+/- 760 square feet
ceiling = 8' 4" exposure = NE*



Scale: 3/16" = 1'



Sophia Snow Place



1205-1215 Centre Street West Roxbury, MA 02132 . 617-325-7900 . www.sophiasnowplace.org